



2024 REPORT TO THE COMMUNITY

July 1, 2023 to June 30, 2024

FACES OF HUNGER, **FACES OF HOPE**



**ROSALBA
ORTIZ**

"Everything is so expensive in the stores, so we end up just buying the essentials like ground beef and potatoes. I plan to spend only a fraction of my check on groceries, but end up spending way more, and go home with so little. At Casa de Peregrinos, I go home with eggs, milk, and always some extra little thing, like bacon. I live all the way over in Chaparral, and drive all the way over here, just for this program.



**GEORGINA
JARAMILLO**

'My husband used to not believe me when I went shopping. It is because you spent too much for what you got,' he'd say. Lately I have been taking him with me, and he says, 'Oh, no! \$200 for those few little things?' It is just the basics, I tell him. If we bought more, it would be even more."



**ESTELA VILLA
CARDENAS**

"With the food we receive from here, we are able to help ourselves greatly, because everything they give us we utilize, and it means that we don't have to go hungry. All thanks to God and you all, and all the volunteers that come to help"

Scan To Preview Interviews





This past year has been a remarkable one for our community. Together, we've made a profound impact on over 37,000 clients facing food insecurity. Through our dedicated team's tireless efforts and our supporters' generosity, we've distributed over 5 million pounds of food, the equivalent of over 4 million meals, valued at over \$8.7 million, based on USDA standards. This is truly a testament to our collective commitment to nourishing our community. Our Food Rescue team has also been instrumental in reducing food waste while increasing our food supply, collecting an

impressive 1.3 million pounds of food. This achievement underscores our dedication to maximizing resources to close the hunger gap in Doña Ana County.

Through dedication and innovation, we've responded to this growing need. Our drive-up pantry saw a surge in client visits, providing a safe and accessible option for families. Additionally, the success of our rural pantry in Hatch, serving an average of 450 families per month, has been truly inspiring. This achievement strengthens our belief in the importance of infrastructure. A permanent location allows for a wider variety of healthy food options, fosters a sense of community, and empowers families to make informed choices about their well-being. The stark difference between the Hatch pantry's reach and the 125 families served by our previous mobile pantry model underscores this point. This success fuels our commitment to building permanent pantries in the south valley, ensuring families in that region have access to the same level of service and support.

These achievements were made possible through the incredible collaboration and unwavering support of our greater community. From our dedicated volunteers to our generous donors, from local businesses to fellow non-profits, we are a collective force working towards a shared goal - to strike out hunger.

This annual report is a celebration of that collaboration, a testament to what we can achieve together. As we move forward, we remain deeply grateful for your partnership and excited to continue making a positive impact on the lives of families in southern New Mexico.

Sonja Jamilla

Sonja Jamilla

Board Chair

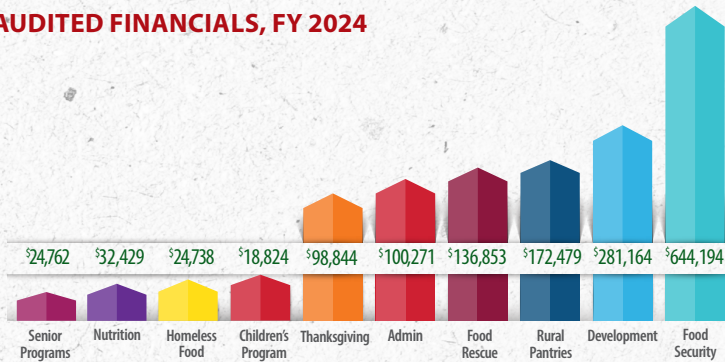
Scan To Preview
Interview with Lorenzo



HOW WE GREW – INCREASE IN SERVICE IN FY 2024

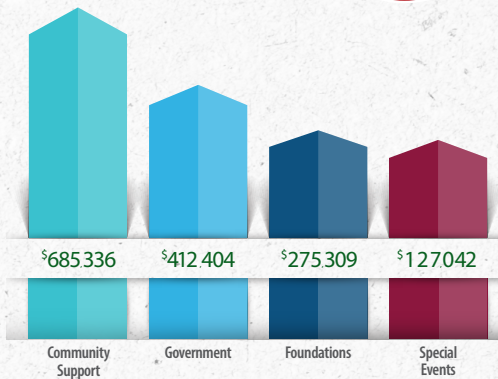
	FY 2024	FY 2023	# Increase	% Increase
Unduplicated clients served	37,064	32,517	4,547	14%
Baskets of food provided	63,208	53,632	9,577	18%
Pounds of food distributed	5,145,061	4,155,275	989,786	24%
Number of meals provided	4,287,551	3,462,729	824,822	24%
Value of food distributed	\$8,849,504	\$7,147,073	\$1,702,431	24%

UNAUDITED FINANCIALS, FY 2024



EXPENSES \$1,519,247

REVENUE BY SOURCE



TOTAL REVENUE \$1,456,398

CdP's Board of Directors conducts a Strategic Planning process yearly, drawing input from staff, committee chairs, volunteers and clients, creating goals and objectives, and assigning individual strategies to committees and staff teams. As we look back on the Strategic Plan for FY 22 to 24, we are pleased and impressed by the level of our success. More remains to be done, but we celebrate these accomplishments.

OUR VALUES

We are committed to:

- Proactively finding new ways to fight hunger
- Continually creating new programs for families with different needs
- Advocating to fight hunger on the state, national, and local level
- Maximizing resources with creative approaches to acquiring food
- Providing an opportunity for rewarding volunteer placements
- Never having a waiting list at CdP
- Never turning eligible clients away
- Never allowing our growth to make us complacent



MISSION

Alleviate hunger in Doña Ana County one person at a time, by compassionately serving those in need through the efforts of our partners, donors, staff, and volunteers.

MOTTO

Food for today, hope for tomorrow.

FY 2024 **IMPACT REPORT**

FOOD SECURITY

Our core program since 1979 at the Las Cruces pantry

Unique, unduplicated clients served

22,557

Baskets provided

33,593

CHILDREN'S RELIEF

Helping families during the school holidays

Clients served *

3,482

Baskets provided

1,007

FOOD RESCUE

Total food rescued

1,380,762

Value of rescued food

\$2,374,910

DRIVE THROUGH

Pre-arranged food pick-up with no wait time

Clients served*

4,433

Baskets provided

4,578

HOPE FOR THE HOLIDAYS

Turkey and all the sides for a great feast at home on Thanksgiving

Clients served*

10,655

Baskets provided

4,874

SENIOR PROGRAM

Providing seniors with nutritious food

Unique, unduplicated clients served

1,263

Baskets provided

1,832

HOMELESS

Special bags of food designed for those with no kitchens

Unique, unduplicated clients served

3,289

Baskets provided

4,684

MOBILE AND OFF-SITE **SERVICES**

STUDENT PANTRIES

Helping low-income college students get the food they need to succeed academically

Unique, clients served

269

Baskets provided

1,960

RURAL FOOD INITIATIVE

Serving the colonias of Doña Ana County with monthly mobile pantries in 10 locations

Unique, unduplicated clients served

6,122

Baskets provided

7,746

HATCH PANTRY

A satellite pantry providing full service to clients in the north valley (1/12/24 to 6/30/24)

Clients served **

2,149

Baskets provided

2,503

HEALTHY SNACK BARS

Providing snacks to low-income children in the community schools

Children served

2,500

DESERT HOPE

A pantry at a housing complex for low-income families

Clients served*

50

UTILITY ASSISTANCE

Connecting clients with the City of Las Cruces utility assistance program

Clients served*

1,064

**Client numbers included in the Rural Food Initiative count

WHO WE ARE



BOARD MEMBERS SERVING DURING FY 2023-24

Sonja Jamilla, Board Chair, Strategic Planning Committee Chair

Michelle Najar, Vice Chair, Personnel Committee Chair

Cindy Seipel-Tunnell, Ph.D, Treasurer, Chair Finance Committee

Shawn Lonasee, Secretary, Operations Committee Chair

Members: Hortencia Banuelos, Doug Bensen, Stephanie Guadian-Blackwell, (Communications Committee Chair), Yolanda Silva, (Programs Committee Chair), Theresa Gonzalez, Melissa Gonzales, (Fund Development Committee Chair), Eric Walkinshaw, Eric Popky, David Maestas, Gary Whitehead, Analisa Martinez, Neal Bitsie, Monica Farnell, Zach Freilino, Heather Quiroz, (Board Development Committee Chair)



LORENZO ALBA, JR.
Executive Director

STAFF MEMBERS SERVING DURING FY 2023-24



Lorenzo Alba, Jr., Nancy Ryan, Bianca Menchaça, Liana Aguirre, Mario Amat, Sam Terrazas, Carolina Burnham-Jimenez, Leticia Garcia, Diana Alvarez, Teresa Sanchez, Bob Witschi, Cesar Mauricio, Jeff Engel, Kimberly Renteria, Marcela Morales, Marco Olvera, Robert Ramirez, Tanya Vizcaino, Frank Hinojos, Cristal Portillo, Cormick Prince, Melissa Dupre, David Silva, Teresa Robledo, Ana Reyes, Betty Alvarez, Sally Scholl

IN MEMORY OF

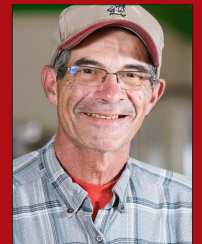


Sally Scholl

This year CdP suffered the unexpected loss of two valued members of its family. On January 6, Sally Scholl, Intake Coordinator for CdP passed away from a long and unrelenting illness. Sally worked all her career as a

registered nurse, and after retiring, felt she needed to continue to serve, and came to CdP to do so. Although she had been working at CdP for only a short time, she had made her mark on the agency, and had become deeply loved by her fellow staff.

Not six weeks later, another devastating loss, not only for CdP, but for all of Doña Ana County as the Village of Hatch Mayor, James "Slim" Whitlock died unexpectedly. Slim's unwavering support and belief in our mission at Casa de Peregrinos were truly inspiring.



James "Slim" Whitlock

We are deeply grateful for his immense support, particularly in the establishment of our latest food pantry in Hatch. His dedication and passion for helping those in need have left a significant mark on our organization and the community as a whole. May his legacy continue to inspire us to serve with compassion and empathy. We will never forget the contributions these two made to our mission.





TERESA SANCHEZ

In mid-2022, a new volunteer began helping at the Rural Pantries, who soon came to Lorenzo and offered to help with volunteer coordination. Teresa Sanchez became a pillar of the CdP family. For over 18 months, she served as a full-time volunteer, taking on the essential thankless jobs so necessary for our operation. Now retired, Teresa changed the way we operate, creating systems for smooth operations that will help us function long into the future.



Sign-up to Volunteer

VOLUNTEER HOURS

Board and Committees

2,223

Client Service

18,286

TOTAL

20,509

Value of volunteer service

(@ \$26.95 per hour based on data from the School of Public Policy at the University of Maryland)

\$552,717

Equivalent to full-time staff

9.6

full-time employees

INTERNS

Diane Chino, Isabella Rodriguez, Isaac Cramer



VOLUNTEERS OF THE YEAR

Volunteers of the Year for 2024 were Linda Johnson, a faithful warehouse volunteer who is present many times each week, and Dr. Tom Packard. Dr. Packard served as a Board Member for CdP for over a decade and worked the Wednesday shift at the pantry for eight more. These two personify the spirit of volunteerism, and have made a huge contribution to hungry families.

WHERE WE SERVE

PERMANENT PANTRIES

- Central Pantry
- Hatch Pantry

RURAL PANTRIES

- Anthony
- Berino
- Butterfield

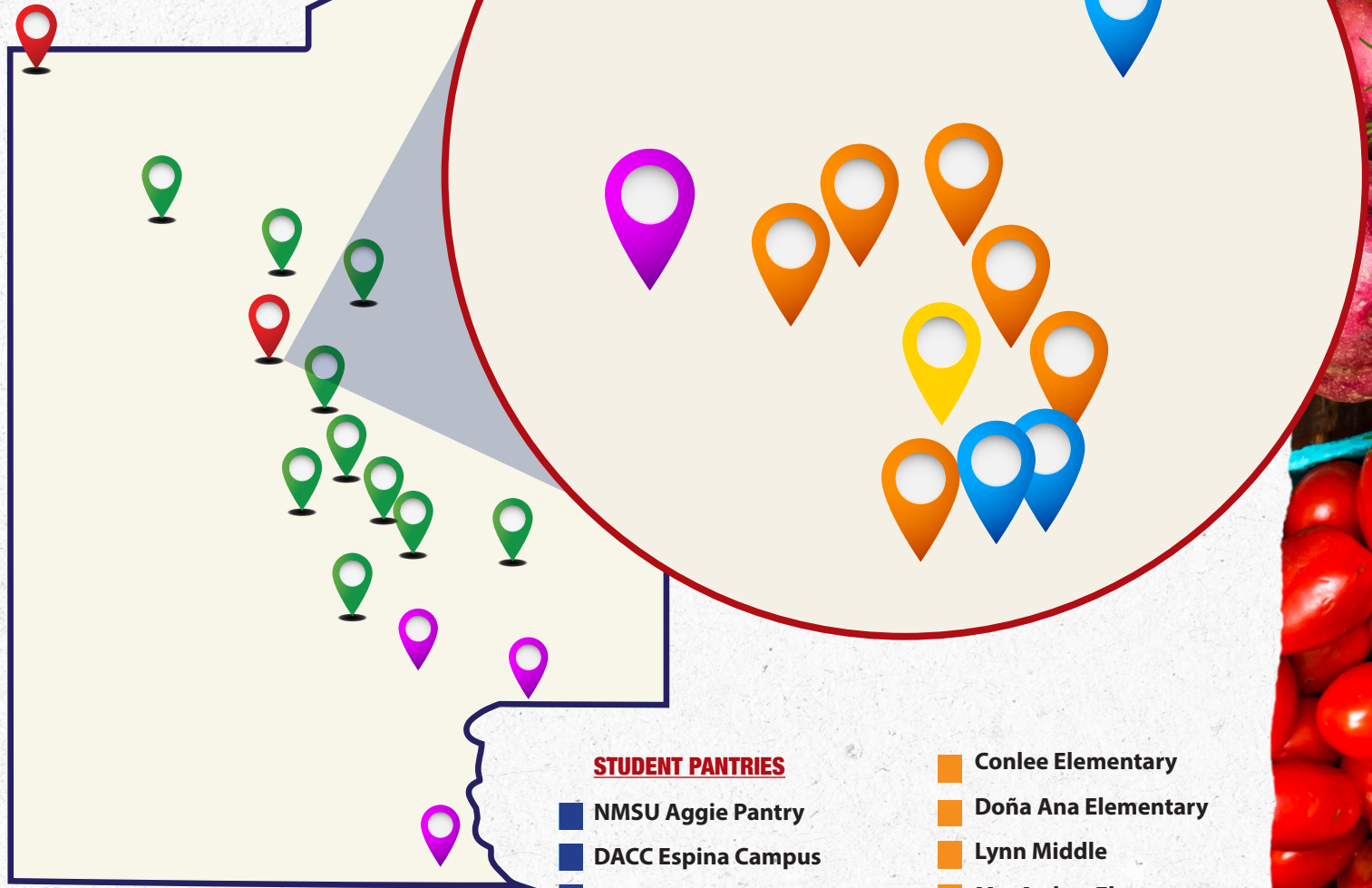
- Chaparral
- Doña Ana
- La Mesa
- Tortugas
- Mesquite
- Radium Springs
- Vado

SITES FOR UPCOMING FACILITIES

- Sunland Park
- Chaparral
- Kitchens at MVCH

LAS CRUCES

DOÑA ANA



STUDENT PANTRIES

- NMSU Aggie Pantry
- DACC Espina Campus
- DACC East Mesa

COMMUNITY SCHOOLS

- Alameda Elementary
- Booker T. Washington Elementary

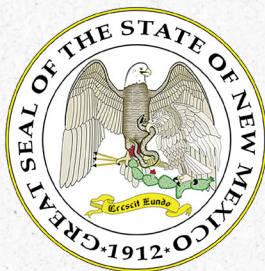
- Conlee Elementary
- Doña Ana Elementary
- Lynn Middle
- MacArthur Elementary
- Mesilla Park Elementary

DESERT HOPE

SUSTAINING PARTNERS



CITY OF LAS CRUCES



United Way of
Southwest New Mexico



ELF
Enchanted Life Foundation
8418 Linwood Rd • Bowling Green, OH 43402-9546
419-262-0983 • paula@enchantedlifefoundation.org



CARL C. ANDERSON SR.
& MARIE JO ANDERSON
Charitable Foundation



Bonnie
Korlick
Foundation

TAWNEY | ACOSTA | CHAPARRO
Truck Crash & Injury Attorneys

Sponsors

Advocate Health Advisors
Nusenda Credit Union
First Light Credit Union
Union Pacific
Costco Wholesale Foundation
Blue Cross/Blue Shield
GECU
Klarich Family Foundation
Burlington Northern Santa Fe

The Community Foundation
of Low Country
Presbyterian Healthcare
Devasthali Family Foundation
Bank of America
Frances Williams



Scan To Donate



Casa de Peregrinos Inc.
999 West Amador, Building 1
Las Cruces, New Mexico, 88005
Phone: 575-523-5542
Email: cdplc@casadeperegrinos.org
Website: www.casadeperegrinos.org